



The St. Agnes
Catholic Community

Belltower

Building a Future of Hope at St. Agnes

“Today’s celebration is more than an occasion of gratitude for graces received. It is also a summons to move forward with firm resolve; to build a future of hope for coming generations.”

Pope Benedict XVI
Yankee Stadium,
April 20, 2008

BUILDING
A FUTURE
OF HOPE

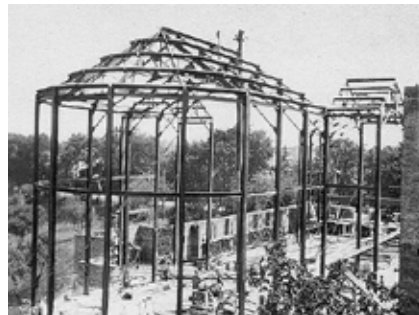


St. Agnes Catholic Community:
Embracing Jesus’ suffering love
for all,
and making it visible
in worship, service
formation and education.



From our Pastor
Jack Conley, C.P.

Over eight decades ago (*February 19, 1928*) Bishop John Floersh offered the Mass of Dedication in our newly completed St. Agnes Church Building. The total cost of the church was \$325,000, an immense debt for a small faith community to assume. So to raise needed funds, Passionist Pastor Fr. Aloysius Dowling, a man of vision and courage, with a warm personality and unbounded courage, began the three-day Parish Carnival. And by 1943, notwithstanding the Depression, the debt had been retired.



Our parishioners have always been extraordinary stewards, and now we are driven by a clear and compelling mission statement which asks us to expand our horizons. Time and time again I have seen you respond generously to the needs of the poor in our city, the victims of natural disasters in the four corners of our globe, and our neighbors down the street. As we continue to live this vision, we look toward the future with optimism about the growth of our community and our commitment to the stewardship way of life. We can be proud!

With this Special Newsletter I am pleased to introduce the *Building a Future of Hope* Campaign and our campaign leaders to you. This is one of the biggest efforts ever undertaken by the Church of Louisville. The Archdiocese has a 200-year history of supporting our local parishes and schools, and it has been most instrumental in the formation and development of our Catholic Community of Saint Agnes.

After a long and comprehensive discernment process, it was the combined wisdom of the Capital Campaign Case Study Committee, our Finance Committee, Pastoral Staff and Pastoral Council that we decided to channel our parish portion of funds to four well-respected charities. I was inspired when one of the co-chairs articulated it so well: “*We realized that others’ needs were far greater than any parish capital improvement project we surfaced.*”

In the coming months, hundreds of fellow parishioners will dedicate their time and talents in an effort to inform the parish of the challenge before us as we undertake the Building a Future of Hope Capital Stewardship Campaign. All we need is trust in God and openness to the Holy Spirit... and **you**.

The teams listed below will soon be enlisting members to help with our campaign. When you are asked to become part of this campaign team, please respond, “Yes!”

Faithful Participation

Campaign Chairs

Jim Tougher
Steve Ford

Advance Commitment

Bridget Burianek (Lead Event Planning)
Chuck Flaherty (Lead Money)

Contact Coordinator Tom Denbow

Contact Linda Jansing

Contact Connie Lusher

Contact Kate Harney

Contact Bill and Mary Ann Sheets

Contact Mary Ann Pieper

Contact David Overly

Contact John Feige

Contact Ben Fultz

Contact Stephen Mock

Contact Keith Starr

Contact Mike Ormerod

Contact Ray Scheller

Children Administrator Carol Meirose

Admin. Assistant John Lundergan

Involvement Angela Porter

Inv. Assistant Scott Karem

Follow-up Mike Jury

Follow-up John Schmidt

Information Melissa and Greg Metzger

Information Don and Vicki Kupper

Information Jack Abbey

Pacesetter Paul Neal

Pacesetter Joe Landenwich

Prayer Paul O'Daniel

Prayer Bill O'Dea

Special Event Michael Denbow

Special Event John Stone

Special Event Cathy Ervin

Special Event Steve and Suzanne Feller

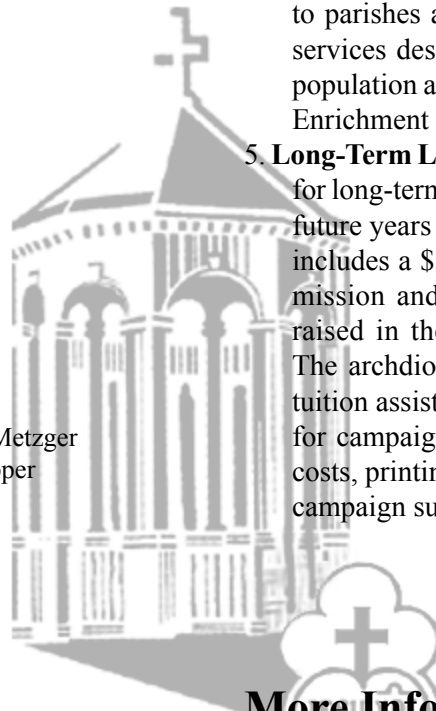
Visual Larry Bisig

Youth Mary Furmenek

A Compelling Need

The Archdiocesan campaign includes the following initiatives:

1. **Seminarian Education Funds** will be used for the education and training of seminarians.
2. **Priest Retirement Funds** will be used to increase the restricted fund for priests' retirement and help reduce the assessment burden on parishes.
3. **Parish Assistance Funds** will be used to assist parishes that face emergencies or unanticipated changes in the needs of the people they serve.
4. **Multicultural Ministries Funds** will provide support to parishes and the Archdiocese for programming and services designed to serve the rapidly growing Latino population and to support new initiatives at the Catholic Enrichment Center, which serves West Louisville.
5. **Long-Term Legacy Fund Funds** will provide seed money for long-term needs such as land that will be enhanced in future years with planned giving efforts. This fund also includes a \$500,000 gift to the Cathedral for its public mission and a 10% tithe (ten percent of the amount raised in the legacy fund) to international missions. The archdiocesan campaign also includes funding for tuition assistance for families in need and an allowance for campaign expenses. These expenses include event costs, printing, postage, and a fixed fee for professional campaign support.



More Information Coming in April

Your time is valuable and limited, so we have designed a packet containing several important items that describe the Building a Future of Hope campaign. Each packet contains a letter from Father Jack and your campaign team, a Building a Future of Hope prayer card, a question slip, and devotional material. Every family in the parish will receive one of these packets so you won't have to attend extra meetings to obtain this information. Packets will be available on the weekend of April 17/18. Please pick one up after the mass you attend that weekend. This will help us save time and reduce postage costs. If you are unable to pick up the packet at the church, we will mail one to you. Once you receive your packet, please look over its contents, discuss this project as a family, and make praying the Building a Future of Hope prayer part of your daily routine. If you have questions, please write them on the question slips provided and return them to the parish office. We want to hear from you and address your questions.

